



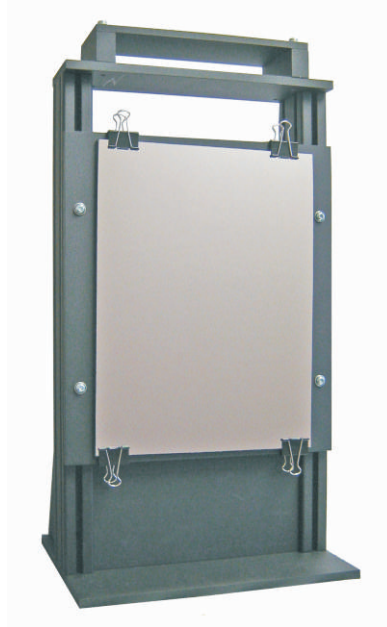
GENERAL INFORMATION

DHL-components

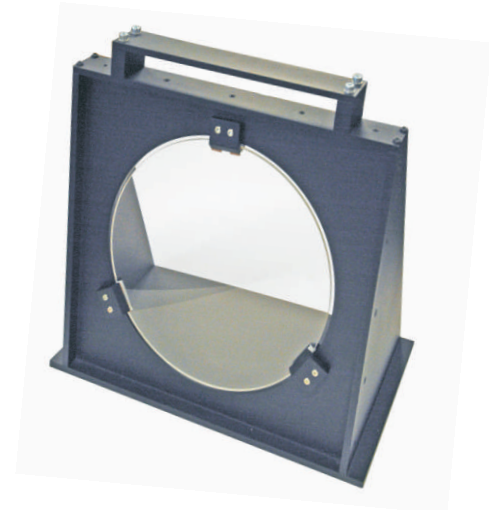
Beside the DHL Holoprinter DHL can provide you a complete holographic setup or separate components on customers specs.

**DMD-projector**

Modified DMD-projector suitable for holography. High resolution 1600 x 1200 pixels. Capable of projecting images from 15 x 15 cm upto 50 x 60 cm in a holographic setup.

**Mirror Holder**

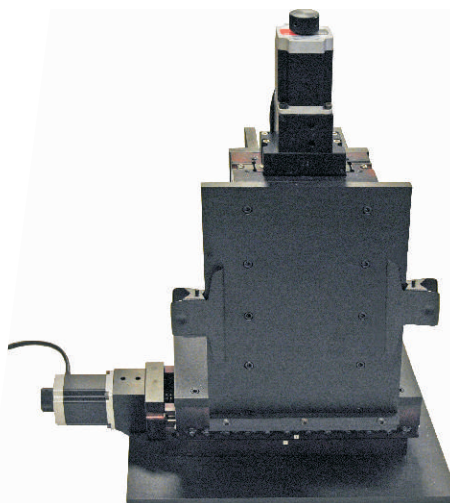
Mirror holder with front surface mirror. Adjustable in height for correct optical axis. Easily replaceable mirror for landscape or portrait orientation. Various sizes possible.

**Lens Holder**

Large format Collimator lens for parallel reference beam. 40 cm Diameter, focal length 300 cm. Fixed optical height.

**Groundglass holder**

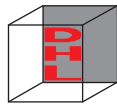
Groundglass holder for use with DMD-projector. Sizes up to 30 x 40 cm can be projected. Larger formats on request possible.

**Recombination stage**

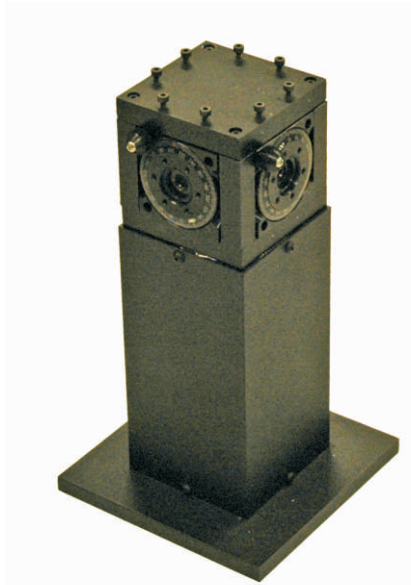
Recombination stage for transferring multiple images on one photoresist plate. A two axis steppercontroller is provided.

**Mirror holder**

Mirror holder for collimator mirror for parallel reference beam.



GENERAL INFORMATION

**Beamsplitter cube**

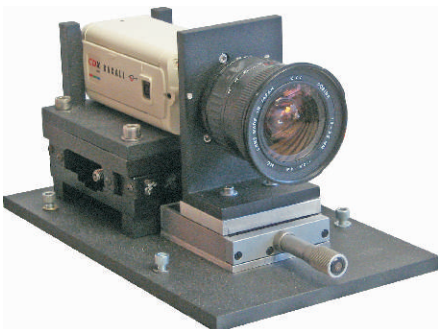
Beamsplitter cube with 3 polarizers.
Several wavelengths possible.
Customer built to fit optical axis client.

**Laser shutter**

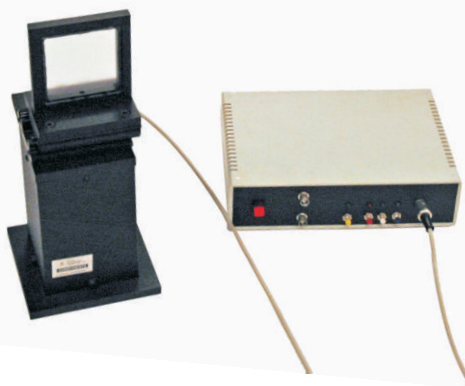
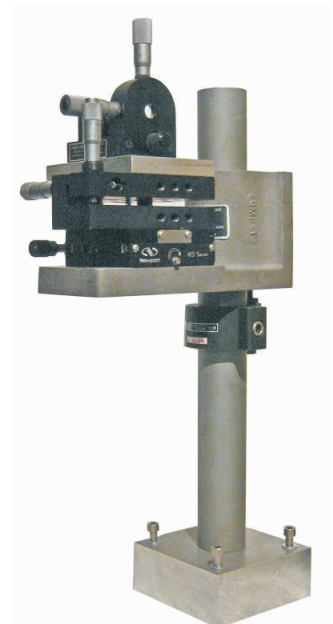
Laser shutter for blocking laserlight.
Capable of handling high laser output.
Easily adjustable in height.

**Clamps**

Clamps for bolting several kinds of
Dhl components onto a breadboard.
On demand metrical or inch thread bolts.

**Shift camera**

Used on a linear track for
grabbing sequences of photographs
for MPGH holograms

**Random Diffuser****Beam expander**

Beam expander for mouting
microscope objectives and pinhole.
Easily adjustable both in heighth as
sideways.